



- 스피들 직장형 · 교체시간 단축 · 고성능 · 고품질 · 옵션 부착 용이
- Spindle Direct-Mounting Type · Minimize changing time
- High Performance and High Quality · Convenient Attachment Option
- 스피들 直装型 · 取替え時間短縮 · 高性能, 高品質 · 便利な取付けオプション
- 直接安装型 · 换装方便 · 性能优, 质量好 · 便于安装选择

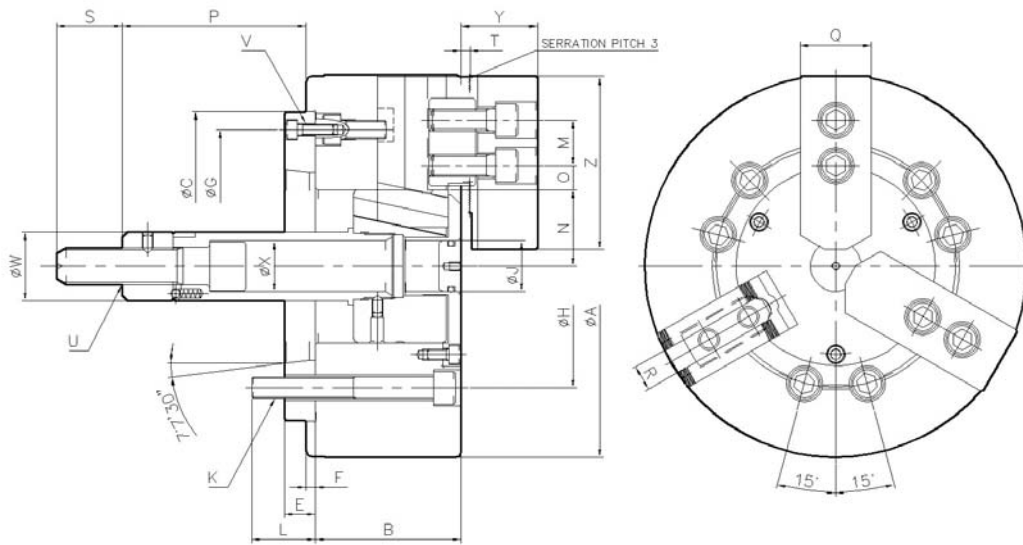
※ 척의 오랜 수명을 유지하기 위해 최소 일2회 이상 그리스를 주입하여 주십시오.  
 ※ It is recommended to grease chucks at least twice a day in order to maximize longevity.

### Specifications / 规格 / 仕様表 / 사양표

Spec사양 Model형식	Order NO. 오더번호	Spindle nose NO. 주축규격	Jaw stroke (Diameter) 쥬 스트로크(직경) mm	Plunger stroke 플런저 스트로크 mm	Gripping Dia(External gripping) 파악경(외경파악)mm		Max. permissible input force 허용 실린더력 KN(kgf)
					Max최대	Min 최소	
CASA-06	1ASA06	A2-5	92	20	165	19	19(1938)
CASA-08	1ASA08	A2-6	88	21	210	23	28(2856)
CASA-10	1ASA10	A2-8	88	25	254	24	32.5(3315)
CASA-12	1ASA12	A2-8	105	30	304	26	41.5(4233)
CASA-15	1ASA15	A2-11	16	35	381	60	81.9(8362)
CASA-18	1ASA18	A2-11	16	35	450	140	81.9(8362)
CASA-21	1ASA21	A2-11, 15	16	35	530	82	81.9(8362)
CASA-24	1ASA24	A2-11, 15	16	35	610	170	81.9(8362)

Spec사양 Model형식	Max. static gripping force 최대 정적파악력 KN(kgf)	Max. permissible speed 최고 사용회전수 r.p.m.(min <sup>-1</sup> )	Weight (With standard soft jaws) 중량(표준소프트 쥬포함) kg	GD <sup>2</sup> Moment of inertia N·m <sup>2</sup> (kgf·m <sup>2</sup> )	Matching cylinder 적용실린더	Matching hard jaw 적용하드쥬	Matching soft jaw 적용소프트 쥬
CASA-06	63(6426)	6000	14	1.96(0.20)	YAS, C, P, T-100	HJ-06T1	SJ-06T1
CASA-08	80(8160)	4800	27	5.79(0.59)	YAS, C, P, T-125	HJ-08T1	SJ-08T1
CASA-10	115(11730)	4100	40	12.84(1.31)	YAS, C, P, T-125	HJ-10T1	SJ-10T1
CASA-12	156(16014)	3400	66	29.52(3.01)	YAS, C, P, T-150	HJ-12A1	SJ-12A2
CASA-15	248(35391)	3040	96	70.5(7.2)	YAS, C, P, T-200	HJ-15A3	SJ-15A3
CASA-18	248(35391)	2710	131	95(9.7)	YAS, C, P, T-200	HJ-15A3	SJ-15A3
CASA-21	272(27838)	1940	198	188.2(19.2)	YAS, C, P, T-200	HJ-21B1	SJ-21A1
CASA-24	272(27838)	1760	223	67.8(6.92)	YAS, C, P, T-200	HJ-21B1	SJ-21A1

Outward Drawing/外型图/外形图/외형도



Dimension/尺寸/寸法表/치수표

Item 항목 Model 형식	A	B	C	D	E	F	G	H	J	K	L	M	Nmax	Nmin
CASA-06	169	84	140	82.563	15	5	116	104.8	23	6-M10	14	20	41	36.7
CASA-08	210	97	170	106.375	17	5	150	133.4	28	6-M12	18	25	46.3	41.9
CASA-10	254	102	220	139.719	18	5	190	171.4	34	6-M16	25	30	51.1	46.7
CASA-12	304	118	220	139.719	18	6	190	171.4	39	6-M16	25	30	61	55.7
CASA-15	381	130	300	196.869	22	6	260	235	27	6-M20	23	43	73	65
CASA-18	450	130	300	196.869	22	6	260	235	27	6-M20	23	43	106.5	98.5
CASA-21	530	146	380	196.869	27	6	330.2	330.2	27	6-M22	28	60	86	78
CASA-24	610	146	380	196.869	27	6	330.2	330.2	27	6-M22	28	60	124.5	117

Item 항목 Model 형식	O max	O min	P max	P min	Q	R	S	T	U	V	W	X	Y	Z
CASA-06	13	7	86.5	66.5	31	12	36	4	M16X2.0	3-M6	32	32	35	72
CASA-08	22.5	9	110	89	39	14	36	5	M20X2.5	3-M6	38	38	43	95
CASA-10	30.7	11.2	140	115	44	16	36	5	M20X2.5	3-M8	38	44	50	110
CASA-12	48.7	12.7	145	115	50	18	36	5	M20X2.5	3-M8	38	50	54	111
CASA-15	54.7	15.7	82	47	50	25.5	55	5	M30X3.5	3-M10	55	60	60	135
CASA-18	48.5	23.2	70	35	50	25.5	55	5	M30X3.5	3-M10	55	60	60.3	135
CASA-21	93.5	27.5	70	35	65	25	55	6	M30X3.5	3-M12	55	60	71	180
CASA-24	93.5	27.5	70	35	65	25	55	6	M30X3.5	3-M12	55	60	71	180

※ 치수 및 사양은 예고없이 변경될 수 있습니다.  
 ※ Specifications are subject to change without notice.